

Summary of Employment, Demographics, and Commuting Patterns for Sumter County, Florida



February 2018

Contents

Labor Shed Analysis 3

OnTheMap, Census Bureau..... 3

Florida Department of Economic Opportunity, Bureau of Labor Market Statistics..... 3

Executive Summary 4

People QuickFacts..... 5

Business and Geography QuickFacts 7

Labor Force, Employment, and Unemployment 7

Population..... 7

Where Workers Work in Sumter County..... 8

Work Area Profile Summary..... 9

Work Area Profile Summary - Demographics.....10

Where Workers Live in Sumter County11

Home Area Profile Summary.....12

Home Area Profile Summary - Demographics.....13

Labor Inflow/Outflow14

Labor Inflow/Outflow Summary15

Work Destination Summary.....17

Home Destination Summary18

Labor Shed Analysis

A labor shed analysis is defined as where workers work and where workers live relative to a user-defined selection area. This analysis helps to determine where a labor market draws its commuting workers. Labor shed studies can draw comparisons between various geographies including state, Congressional District, Metropolitan Statistical Area (MSA), county, Workforce Investment Area (WIA), Zip Code, and Census tract. By indicating how many of the selection area workers work outside the area, labor sheds can help identify potential pools of workers who would be available for work in the user-defined area.

Labor shed studies provide economic developers and existing or prospective employers a tool to understand the local labor market and make informed expansion and site selection decisions. In addition, labor shed studies can help indicate potential impacts from environmental, social, or economic incidents.

OnTheMap, Census Bureau

OnTheMap is a mapping and reporting tool developed by the U.S. Census Bureau showing employment and home locations of workers with companion reports for user-defined areas. It is the first synthetic data product released by the Census Bureau. OnTheMap is an important tool for Florida to perform labor inflow/outflow analyses and provide commuting data to planning and economic development agencies as well as Regional Workforce Boards. OnTheMap data is also used by the Department of Economic Opportunity to help quantify natural disaster impacts for emergency management agencies based on where workers live and where they work.

OnTheMap integrates existing data from state-supplied administrative records on workers and employers with existing federal censuses, surveys, and other administrative records. The state Labor Market Information (LMI) agencies supply key data from unemployment wage records and from businesses each quarter. The Census Bureau merges the state-supplied data with current demographic information to produce the data found in OnTheMap. By combining data from different administrative sources, censuses, and surveys, the Census Bureau produces local employment information that was not previously available.

Florida Department of Economic Opportunity, Bureau of Labor Market Statistics

The Florida Department of Economic Opportunity, Bureau of Labor Market Statistics, produces, analyzes, and distributes labor statistics to improve economic decision making. These data are produced as part of the federal/state cooperative statistical program with the U.S. Department of Labor, Bureau of Labor Statistics, and the Employment and Training Administration.

Executive Summary

The analysis of workforce and demographic characteristics, including commuting patterns of Sumter County was conducted to provide economic data on the population and labor force living or working in the county. The report is useful for detailing where workers work and live in order to align resources. This report includes population, labor force, and demographics for Sumter County.

Workers employed in Sumter County are clustered in the Health Care and Social Assistance (15.7%), and Retail Trade (14.3%) industries. Workers living in Sumter County are concentrated in the Retail Trade (15.5%), and Health Care and Social Assistance (13.2%) industries.

A detailed examination of commuting patterns for Sumter County shows that the county has a net inflow of 2,180 workers. Using the latest annual Census data available, there were 23,061 workers employed in Sumter County and 20,881 workers living in Sumter County. Of the workers who lived in the county, 14,640 workers (70.1%) were employed outside the county.

With 70.1% of workers who reside in Sumter County employed outside the county, Sumter County had the 13th highest outflow rate among Florida counties. Glades County (85.3%) had the highest outflow rate, followed by Gilchrist County (79.7%), and Jefferson County (79.7%). Leon County (18.6%), Miami-Dade County (20.7%), and Duval County (23.2%) had the lowest worker outflow rates.

Of the 14,640 Sumter County workers employed outside the county, the top destination counties are Lake County (3,902 workers), Marion County (1,489 workers), and Hillsborough County (1,137 workers). Of the 16,820 Sumter County workers living outside the county, the top origin counties are Marion County (4,663 workers), Lake County (4,182 workers), and Citrus County (1,168 workers).

Sumter County

People QuickFacts

	Sumter County	Florida	United States
Population			
Population estimates, July 1, 2017, (V2017)	NA	20,984,400	325,719,178
Population estimates, July 1, 2016	123,996	20,612,439	323,127,513
Population estimates base, April 1, 2010, (V2017)	NA	18,804,594	308,758,105
Population estimates base, April 1, 2010	93,420	18,804,592	308,758,105
Population, percent change - April 1, 2010 (estimates base) to July 1, 2017, (V2017)	NA	11.6%	5.5%
Population, percent change - April 1, 2010 (estimates base) to July 1, 2016	32.7%	9.6%	4.7%
Population, Census, April 1, 2010	93,420	18,801,310	308,745,538
Age and Sex			
Persons under 5 years, percent, July 1, 2016	2.0%	5.5%	6.2%
Persons under 5 years, percent, April 1, 2010	2.4%	5.7%	6.5%
Persons under 18 years, percent, July 1, 2016	7.1%	20.1%	22.8%
Persons under 18 years, percent, April 1, 2010	9.1%	21.3%	24.0%
Persons 65 years and over, percent, July 1, 2016	56.3%	19.9%	15.2%
Persons 65 years and over, percent, April 1, 2010	43.4%	17.3%	13.0%
Female persons, percent, July 1, 2016	50.0%	51.1%	50.8%
Female persons, percent, April 1, 2010	48.0%	51.1%	50.8%
Race and Hispanic Origin			
White alone, percent, July 1, 2016(a)	90.1%	77.6%	76.9%
Black or African American alone, percent, July 1, 2016(a)	7.6%	16.8%	13.3%
American Indian and Alaska Native alone, percent, July 1, 2016(a)	0.4%	0.5%	1.3%
Asian alone, percent, July 1, 2016(a)	0.9%	2.9%	5.7%
Native Hawaiian and Other Pacific Islander alone, percent, July 1, 2016(a)	0.1%	0.1%	0.2%
Two or More Races, percent, July 1, 2016	0.9%	2.1%	2.6%
Hispanic or Latino, percent, July 1, 2016(b)	5.5%	24.9%	17.8%
White alone, not Hispanic or Latino, percent, July 1, 2016	85.3%	54.9%	61.3%
Population Characteristics			
Veterans, 2012-2016	19,038	1,480,133	19,535,341
Foreign born persons, percent, 2012-2016	5.2%	19.9%	13.2%
Legend			
The vintage year (e.g., V2016) refers to the final year of the series (2010 thru 2016). Different vintage years of estimates are not comparable.			
Fact Notes			
(a) Includes persons reporting only one race			
(b) Hispanics may be of any race, so also are included in applicable race categories			
"NA" Not available			

Source: U.S. Census Bureau, State & County QuickFacts.

Sumter County

People QuickFacts (continued)

	Sumter County	Florida	United States
Housing			
Housing units, July 1, 2016	68,199	9,301,642	135,697,926
Housing units, April 1, 2010	53,026	8,989,580	131,704,730
Owner-occupied housing unit rate, 2012-2016	90.2%	64.8%	63.6%
Median value of owner-occupied housing units, 2012-2016	\$227,000	\$166,800	\$184,700
Median selected monthly owner costs -with a mortgage, 2012-2016	\$1,170	\$1,422	\$1,491
Median selected monthly owner costs -without a mortgage, 2012-2016	\$439	\$466	\$462
Median gross rent, 2012-2016	\$808	\$1,032	\$949
Building permits, 2016	1,072	116,240	1,206,642
Families & Living Arrangements			
Households, 2012-2016	49,362	7,393,262	117,716,237
Persons per household, 2012-2016	2.11	2.64	2.64
Living in same house 1 year ago, percent of persons age 1 year+, 2012-2016	85.7%	83.9%	85.2%
Language other than English spoken at home, percent of persons age 5 years+, 2012-2016	6.4%	28.3%	21.1%
Education			
High school graduate or higher, percent of persons age 25 years+, 2012-2016	90.5%	87.2%	87.0%
Bachelor's degree or higher, percent of persons age 25 years+, 2012-2016	29.8%	27.9%	30.3%
Health			
With a disability, under age 65 years, percent, 2012-2016	12.6%	8.6%	8.6%
Persons without health insurance, under age 65 years, percent	12.0%	15.3%	10.1%
Economy			
In civilian labor force, total, percent of population age 16 years+, 2012-2016	23.8%	58.5%	63.1%
In civilian labor force, female, percent of population age 16 years+, 2012-2016	24.6%	54.3%	58.3%
Total accommodation and food services sales, 2012 (\$1,000)(c)	117,207	49,817,925	708,138,598
Total health care and social assistance receipts/revenue, 2012 (\$1,000)(c)	381,177	124,061,425	2,040,441,203
Total manufacturers shipments, 2012 (\$1,000)(c)	461,865	96,924,106	5,696,729,632
Total merchant wholesaler sales, 2012 (\$1,000)(c)	D	252,626,608	5,208,023,478
Total retail sales, 2012 (\$1,000)(c)	908,807	273,867,145	4,219,821,871
Total retail sales per capita, 2012(c)	\$8,943	\$14,177	\$13,443
Transportation			
Mean travel time to work (minutes), workers age 16 years+, 2012-2016	25.0	26.7	26.1
Income & Poverty			
Median household income (in 2016 dollars), 2012-2016	\$52,594	\$48,900	\$55,322
Per capita income in past 12 months (in 2016 dollars), 2012-2016	\$31,591	\$27,598	\$29,829
Persons in poverty, percent	10.5%	14.7%	12.7%
Legend			
The vintage year (e.g., V2016) refers to the final year of the series (2010 thru 2016). Different vintage years of estimates are not comparable.			
<i>Fact Notes</i>			
(c) Economic Census - Puerto Rico data are not comparable to U.S. Economic Census data			
"D" Suppressed to avoid disclosure of confidential information			

Source: U.S. Census Bureau, State & County QuickFacts.

Sumter County

Business and Geography QuickFacts

	Sumter County	Florida	United States
Business			
Total employer establishments, 2015	1,383	532,830	7,663,938
Total employment, 2015	20,144	7,777,990	124,085,947
Total annual payroll, 2015 (\$1,000)	716,932	337,074,525	6,253,488,252
Total employment, percent change, 2014-2015	6.1%	4.5%	2.5%
Total nonemployer establishments, 2015	6,006	2,040,33	24,331,403
All firms, 2012	5,386	2,100,18	27,626,360
Men-owned firms, 2012	2,858	1,084,88	14,844,597
Women-owned firms, 2012	1,932	807,817	9,878,397
Minority-owned firms, 2012	719	926,112	7,952,386
Nonminority-owned firms, 2012	4,507	1,121,749	18,987,918
Veteran-owned firms, 2012	857	185,756	2,521,682
Nonveteran-owned firms, 2012	4,245	1,846,686	24,070,685
Geography			
Population per square mile, 2010	170.8	350.6	87.4
Land area in square miles, 2010	546.93	53,624.76	3,531,905.43
FIPS Code	12119	12	00

Source: U.S. Census Bureau, State & County QuickFacts.

Labor Force, Employment, and Unemployment

	December 2017				December 2016			
	LABOR	EMPLOY-	UNEMPLOYMENT		LABOR	EMPLOY-	UNEMPLOYMENT	
	FORCE	MENT	LEVEL	RATE (%)	FORCE	MENT	LEVEL	RATE (%)
Workforce Region 12	1,328,511	1,284,776	43,735	3.3	1,291,754	1,235,184	56,570	4.4
Lake County	148,947	143,765	5,182	3.5	145,213	138,428	6,785	4.7
Orange County	730,265	707,277	22,988	3.1	709,538	679,765	29,773	4.2
Osceola County	167,053	160,858	6,195	3.7	162,465	154,587	7,878	4.8
Seminole County	252,227	244,369	7,858	3.1	245,105	234,969	10,136	4.1
Sumter County	30,019	28,507	1,512	5.0	29,433	27,435	1,998	6.8
Florida	10,063,000	9,694,000	368,000	3.7	9,910,000	9,442,000	467,000	4.7
United States	159,880,000	153,602,000	6,278,000	3.9	158,968,000	151,798,000	7,170,000	4.5

Source: U.S. Department of Labor, Bureau of Labor Statistics, Local Area Unemployment Statistics.

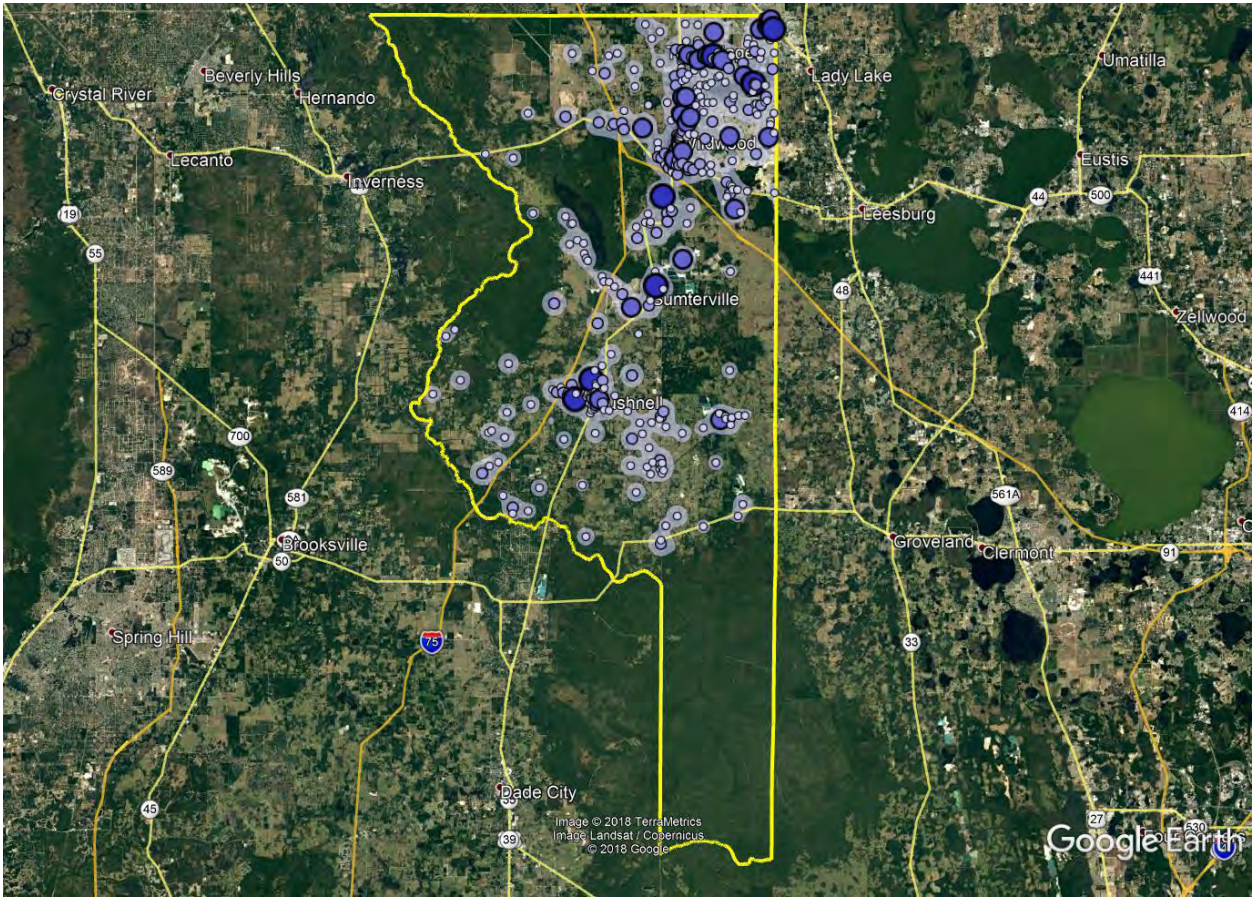
Population

	Population Estimate (as of July 1)						
	2010	2011	2012	2013	2014	2015	2016
Workforce Region 12	2,233,787	2,274,286	2,329,263	2,377,885	2,437,071	2,501,014	2,565,253
Lake County	297,862	299,926	303,437	307,922	315,657	325,518	335,396
Orange County	1,148,716	1,169,806	1,202,048	1,225,366	1,253,631	1,284,864	1,314,367
Osceola County	269,846	278,906	289,501	299,822	311,445	323,028	336,015
Seminole County	423,083	427,064	431,487	436,512	442,326	448,722	455,479
Sumter County	94,280	98,584	102,790	108,263	114,012	118,882	123,996
Florida	18,849,098	19,096,952	19,344,156	19,582,022	19,888,741	20,244,914	20,612,439
United States	309,348,193	311,663,358	313,998,379	316,204,908	318,563,456	320,896,618	323,127,513

Source: U.S. Census Bureau, Population Division.

Sumter County

Where Workers Work in Sumter County



Source: U.S. Census Bureau, OnTheMap Application and Longitudinal Employer-Household Dynamics program; Google Earth.

Map Legend

Job Density [Jobs/Sq. Mile]

- 5 - 154
- 155 - 604
- 605 - 1,352
- 1,353 - 2,401
- 2,402 - 3,749

Job Count [Jobs/Census Block]

- 1 - 2
- 3 - 29
- 30 - 147
- 148 - 462
- 463 - 1,128

Sumter County

Work Area Profile Summary

	Count	Share
Total Primary Jobs	23,061	100.0%
Jobs by Worker Age		
Age 29 or younger	4,848	21.0%
Age 30 to 54	11,850	51.4%
Age 55 or older	6,363	27.6%
Jobs by Earnings		
\$1,250 per month or less	6,148	26.7%
\$1,251 to \$3,333 per month	9,814	42.6%
More than \$3,333 per month	7,099	30.8%
Jobs by NAICS Industry Sector		
Agriculture, Forestry, Fishing and Hunting	366	1.6%
Mining, Quarrying, and Oil and Gas Extraction	29	0.1%
Utilities	569	2.5%
Construction	2,593	11.2%
Manufacturing	1,126	4.9%
Wholesale Trade	315	1.4%
Retail Trade	3,290	14.3%
Transportation and Warehousing	379	1.6%
Information	42	0.2%
Finance and Insurance	455	2.0%
Real Estate and Rental and Leasing	447	1.9%
Professional, Scientific, and Technical Services	692	3.0%
Management of Companies and Enterprises	16	0.1%
Administration & Support, Waste Management and Remediation	915	4.0%
Educational Services	1,249	5.4%
Health Care and Social Assistance	3,632	15.7%
Arts, Entertainment, and Recreation	398	1.7%
Accommodation and Food Services	3,033	13.2%
Other Services (excluding Public Administration)	517	2.2%
Public Administration	2,998	13.0%

Source: U.S. Census Bureau, OnTheMap Application and Longitudinal Employer-Household Dynamics program.

Sumter County

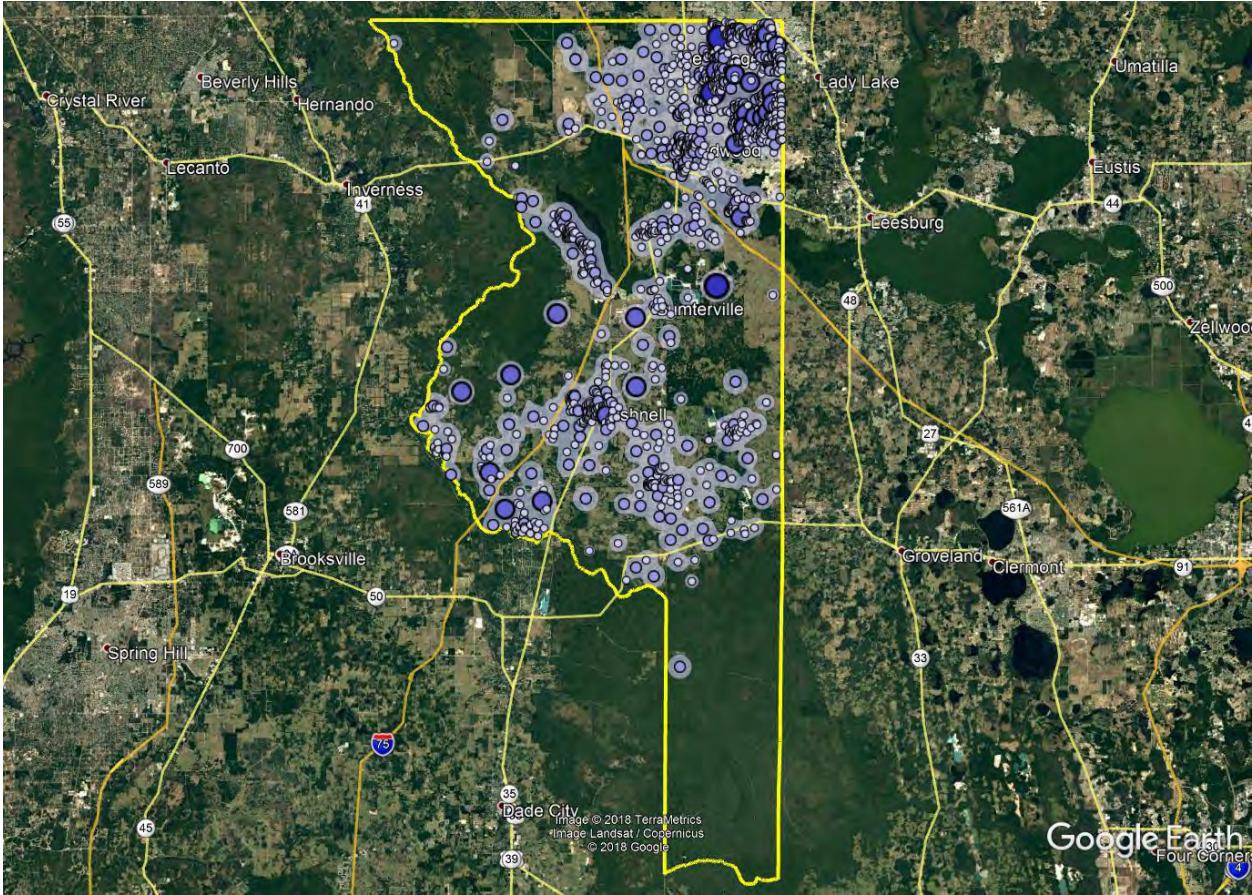
Work Area Profile Summary - Demographics

Jobs by Worker Race		
White Alone	19,694	85.4%
Black or African American Alone	2,552	11.1%
American Indian or Alaska Native Alone	106	0.5%
Asian Alone	413	1.8%
Native Hawaiian or Other Pacific Islander Alone	22	0.1%
Two or More Race Groups	274	1.2%
Jobs by Worker Ethnicity		
Not Hispanic or Latino	20,652	89.6%
Hispanic or Latino	2,409	10.4%
Jobs by Worker Educational Attainment		
Less than high school	2,531	11.0%
High school or equivalent, no college	5,701	24.7%
Some college or Associate degree	5,626	24.4%
Bachelor's degree or advanced degree	4,355	18.9%
Educational attainment not available (workers aged 29 or younger)	4,848	21.0%
Jobs by Worker Sex		
Male	11,911	51.6%
Female	11,150	48.4%

Source: U.S. Census Bureau, OnTheMap Application and Longitudinal Employer-Household Dynamics program.

Sumter County

Where Workers Live in Sumter County



Source: U.S. Census Bureau, OnTheMap Application and Longitudinal Employer-Household Dynamics program; Google Earth.

Map Legend

Job Density [Jobs/Sq. Mile]	Job Count [Jobs/Census Block]
■ 5 - 81	○ 1 - 2
■ 82 - 310	○ 3 - 18
■ 311 - 692	○ 19 - 91
■ 693 - 1,228	● 92 - 287
■ 1,229 - 1,916	● 288 - 701

Sumter County

Home Area Profile Summary

	Count	Share
Total Primary Jobs	20,881	100.0%
Jobs by Worker Age		
Age 29 or younger	3,779	18.1%
Age 30 to 54	9,488	45.4%
Age 55 or older	7,614	36.5%
Jobs by Earnings		
\$1,250 per month or less	6,654	31.9%
\$1,251 to \$3,333 per month	8,659	41.5%
More than \$3,333 per month	5,568	26.7%
Jobs by NAICS Industry Sector		
Agriculture, Forestry, Fishing and Hunting	323	1.5%
Mining, Quarrying, and Oil and Gas Extraction	26	0.1%
Utilities	226	1.1%
Construction	1,789	8.6%
Manufacturing	930	4.5%
Wholesale Trade	665	3.2%
Retail Trade	3,228	15.5%
Transportation and Warehousing	579	2.8%
Information	246	1.2%
Finance and Insurance	589	2.8%
Real Estate and Rental and Leasing	420	2.0%
Professional, Scientific, and Technical Services	857	4.1%
Management of Companies and Enterprises	146	0.7%
Administration & Support, Waste Management and Remediation	1,223	5.9%
Educational Services	1,176	5.6%
Health Care and Social Assistance	2,762	13.2%
Arts, Entertainment, and Recreation	1,263	6.0%
Accommodation and Food Services	2,057	9.9%
Other Services (excluding Public Administration)	629	3.0%
Public Administration	1,747	8.4%

Source: U.S. Census Bureau, OnTheMap Application and Longitudinal Employer-Household Dynamics program.

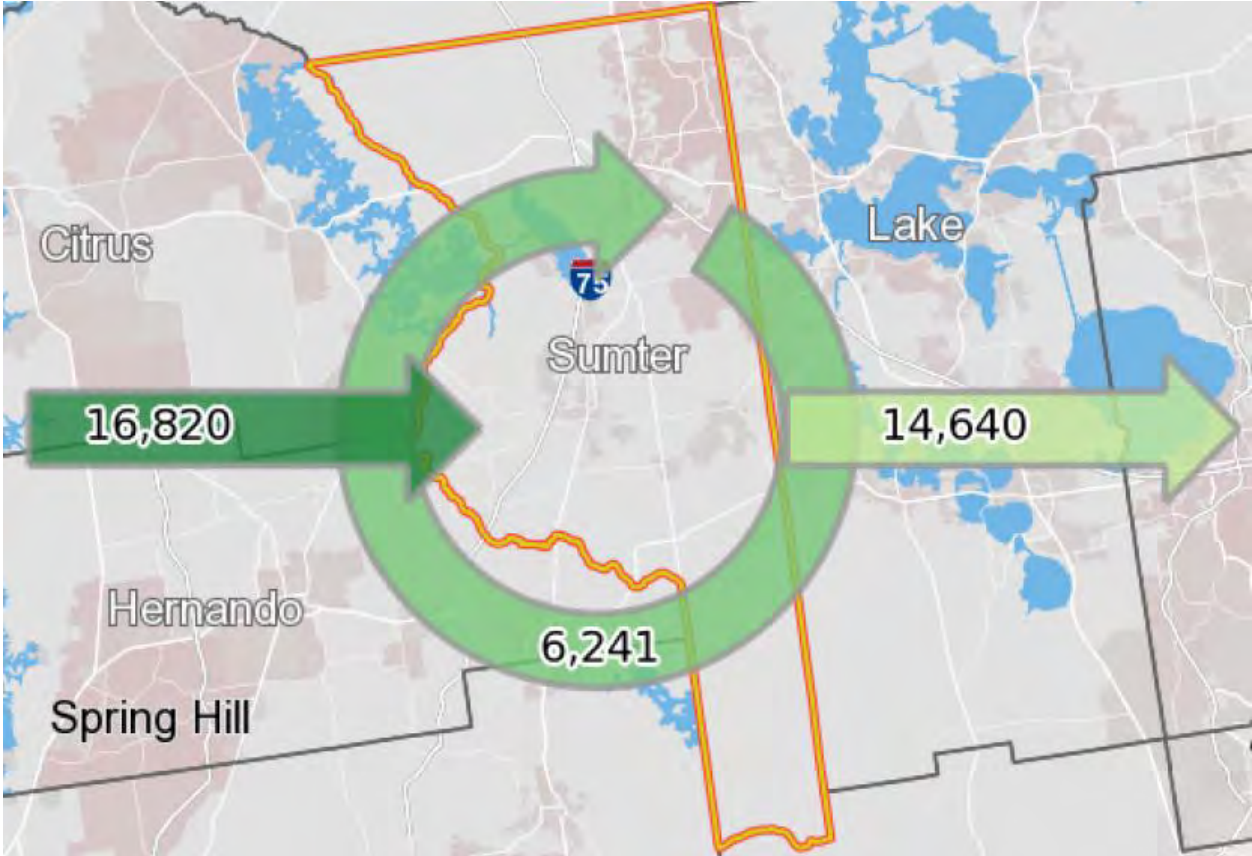
Sumter County

Home Area Profile Summary - Demographics

Jobs by Worker Race		
White Alone	18,218	87.2%
Black or African American Alone	2,133	10.2%
American Indian or Alaska Native Alone	90	0.4%
Asian Alone	263	1.3%
Native Hawaiian or Other Pacific Islander Alone	17	0.1%
Two or More Race Groups	160	0.8%
Jobs by Worker Ethnicity		
Not Hispanic or Latino	19,512	93.4%
Hispanic or Latino	1,369	6.6%
Jobs by Worker Educational Attainment		
Less than high school	2,221	10.6%
High school or equivalent, no college	5,171	24.8%
Some college or Associate degree	5,528	26.5%
Bachelor's degree or advanced degree	4,182	20.0%
Educational attainment not available (workers aged 29 or younger)	3,779	18.1%
Jobs by Worker Sex		
Male	10,810	51.8%
Female	10,071	48.2%

Source: U.S. Census Bureau, OnTheMap Application and Longitudinal Employer-Household Dynamics program.

Sumter County
Labor Inflow/Outflow



Source: U.S. Census Bureau, OnTheMap Application and Longitudinal Employer-Household Dynamics program.

Of the 23,061 people who are employed in Sumter County, 6,241 (27.1%) live and work in the county. There are 16,820 (72.9%) workers who live outside Sumter County and work within the county. Of the 20,881 workers who live within Sumter County, 14,640 (70.1%) residents work outside the county. There is a net inflow of 2,180 workers into Sumter County.

Sumter County

Labor Inflow/Outflow Summary

Selection Area Labor Market Size (Primary Jobs)	Count	Share
Employed in the Selection Area	23,061	100.0%
Living in the Selection Area	20,881	90.5%
Net Job Inflow (+) or Outflow (-)	2,180	-
In-Area Labor Force Efficiency (Primary Jobs)		
Living in the Selection Area	20,881	100.0%
Living and Employed in the Selection Area	6,241	29.9%
Living in the Selection Area but Employed Outside	14,640	70.1%
In-Area Employment Efficiency (Primary Jobs)		
Employed in the Selection Area	23,061	100.0%
Employed and Living in the Selection Area	6,241	27.1%
Employed in the Selection Area but Living Outside	16,820	72.9%
Outflow Job Characteristics		
External Jobs Filled by Residents	14,640	100.0%
Workers Aged 29 or younger	2,832	19.3%
Workers Aged 30 to 54	6,647	45.4%
Workers Aged 55 or older	5,161	35.3%
Workers Earning \$1,250 per month or less	4,602	31.4%
Workers Earning \$1,251 to \$3,333 per month	6,121	41.8%
Workers Earning More than \$3,333 per month	3,917	26.8%
Workers in the "Goods Producing" Industry Class	1,873	12.8%
Workers in the "Trade, Transportation, and Utilities" Industry Class	3,848	26.3%
Workers in the "All Other Services" Industry Class	8,919	60.9%

Source: U.S. Census Bureau, OnTheMap Application and Longitudinal Employer-Household Dynamics program.

Sumter County

Labor Inflow/Outflow Summary (continued)

Inflow Job Characteristics (Primary Jobs)	Count	Share
Internal Jobs Filled by Outside Workers	16,820	100.0%
Workers Aged 29 or younger	3,901	23.2%
Workers Aged 30 to 54	9,009	53.6%
Workers Aged 55 or older	3,910	23.2%
Workers Earning \$1,250 per month or less	4,096	24.4%
Workers Earning \$1,251 to \$3,333 per month	7,276	43.3%
Workers Earning More than \$3,333 per month	5,448	32.4%
Workers in the "Goods Producing" Industry Class	2,919	17.4%
Workers in the "Trade, Transportation, and Utilities" Industry Class	3,703	22.0%
Workers in the "All Other Services" Industry Class	10,198	60.6%
Interior Flow Job Characteristics (Primary Jobs)		
Internal Jobs Filled by Residents	6,241	100.0%
Workers Aged 29 or younger	947	15.2%
Workers Aged 30 to 54	2,841	45.5%
Workers Aged 55 or older	2,453	39.3%
Workers Earning \$1,250 per month or less	2,052	32.9%
Workers Earning \$1,251 to \$3,333 per month	2,538	40.7%
Workers Earning More than \$3,333 per month	1,651	26.5%
Workers in the "Goods Producing" Industry Class	1,195	19.1%
Workers in the "Trade, Transportation, and Utilities" Industry Class	850	13.6%
Workers in the "All Other Services" Industry Class	4,196	67.2%

Source: U.S. Census Bureau, OnTheMap Application and Longitudinal Employer-Household Dynamics program.

Work Destination Summary

Where Workers are Employed Who Live in Sumter County

	Count	Share
Total Primary Jobs	20,881	100.0%
Job Counts by Counties Where Workers are Employed - Primary Jobs		
Sumter County, FL	6,241	29.9%
Lake County, FL	3,902	18.7%
Marion County, FL	1,489	7.1%
Hillsborough County, FL	1,137	5.4%
Orange County, FL	1,097	5.3%
Pinellas County, FL	639	3.1%
Pasco County, FL	619	3.0%
Duval County, FL	612	2.9%
Polk County, FL	496	2.4%
Citrus County, FL	470	2.3%
Hernando County, FL	460	2.2%
Alachua County, FL	373	1.8%
Seminole County, FL	332	1.6%
Volusia County, FL	297	1.4%
Palm Beach County, FL	260	1.2%
Brevard County, FL	191	0.9%
Osceola County, FL	162	0.8%
Broward County, FL	160	0.8%
Manatee County, FL	157	0.8%
Columbia County, FL	148	0.7%
Lee County, FL	145	0.7%
Miami-Dade County, FL	119	0.6%
Leon County, FL	115	0.6%
Sarasota County, FL	109	0.5%
Clay County, FL	97	0.5%
All Other Locations	1,054	5.0%

Source: U.S. Census Bureau, OnTheMap Application and Longitudinal Employer-Household Dynamics program.

Home Destination Summary

Where Workers Live Who are Employed in Sumter County

	Count	Share
Total Primary Jobs	23,061	100.0%
Job Counts by Counties Where Workers Live - Primary Jobs		
Sumter County, FL	6,241	27.1%
Marion County, FL	4,663	20.2%
Lake County, FL	4,182	18.1%
Citrus County, FL	1,168	5.1%
Orange County, FL	899	3.9%
Hernando County, FL	710	3.1%
Hillsborough County, FL	544	2.4%
Volusia County, FL	531	2.3%
Pasco County, FL	525	2.3%
Polk County, FL	393	1.7%
Seminole County, FL	354	1.5%
Pinellas County, FL	334	1.4%
Duval County, FL	306	1.3%
Alachua County, FL	210	0.9%
Osceola County, FL	202	0.9%
Brevard County, FL	186	0.8%
Sarasota County, FL	107	0.5%
Lee County, FL	98	0.4%
Manatee County, FL	97	0.4%
Palm Beach County, FL	91	0.4%
Clay County, FL	86	0.4%
St. Johns County, FL	85	0.4%
Levy County, FL	80	0.3%
Miami-Dade County, FL	74	0.3%
Flagler County, FL	64	0.3%
All Other Locations	831	3.6%

Source: U.S. Census Bureau, OnTheMap Application and Longitudinal Employer-Household Dynamics program.

**Florida Department of Economic Opportunity
Bureau of Labor Market Statistics**

**Caldwell Building
MSC G-020
107 E. Madison Street
Tallahassee, Florida 32399-4111
Phone (850) 245-7257**



www.floridajobs.org/labor-market-information